

Relion 1900

Power Efficient Intel-based HPC Server Designed for Next- generation Datacenters

Content Management System Console User's Guide

Rev. 1.3



Table of Contents

Using Your Gigabyte Content Management System Console.....	3
Gigabyte Content Management System Key Features and Functions	4
Software Install	5
Prerequisites on remote management PC.....	5
Install Java Tool.....	5
Gigabyte Content Management Network Configuration	6
Using the Web UI.....	8
Gigabyte Content Management System Console Overview	9
Enter Gigabyte Content Management System Console	10
Properties	10
Configuration	11
Network.....	11
Network Security	12
Users	13
Services	14
IPMI	15
Time Setting.....	17
Sessions.....	18
LDAP	19
Updates	20
Utilities.....	21
Server Information	22
Power Control	22
Voltages.....	23
Thermal	24
Fans.....	24
Temperature	25
System Event Log	26
Event Management	27
Platform Event	27
Trap Settings	28
Email Settings	29
Serial Over LAN	30
Remote Console	31
Console Redirection.....	31
Console Redirection Configuration.....	34
KVM Function Description	35
Main Menu.....	35
File	35
View	36

Marcos.....	37
Tools.....	37
Power	39
Help.....	39

Using Your Gigabyte Content Management System Console

The Gigabyte Content Management System Console has a user-friendly Graphics User Interface (GUI) called the Gigabyte Content Management System Console GUI. It is designed to be easy to use. It has a low learning curve because it uses a standard Internet browser. You can expect to be up and running in less than five minutes. This chapter allows you to become familiar with the Gigabyte Content Management System Console GUI's various functions. Each function is described in detail.



Gigabyte Content Management System Key Features and Functions

- Support IPMI v2.0
- Out-of-band monitoring and control for server management over LAN.
- FRU information report includes main board part number, product name, and manufacturer, etc.)
- Health status/Hardware monitoring report.
- Events log, view, and clear.
- Event notification via PET (Platform Event Trap).
- Platform Event Filtering (PEF) to take selected action for selected events.
- Chassis management includes power control and status report, front panel buttons and LEDs control.
- Support multi-session user, and alert destination for LAN channel.

Software Install

Prerequisites on remote management PC

Before installing Java tool, please check your system for the following required configuration requirements:

- Supported Browsers:
 - Internet Explorer 8~12
 - Google chrome Version 29.0.1547.66m
 - Firefox 2.0
- JAVA Recommended Version 8 Update 25 or later version (file size: ~ 623KB)

Install Java Tool

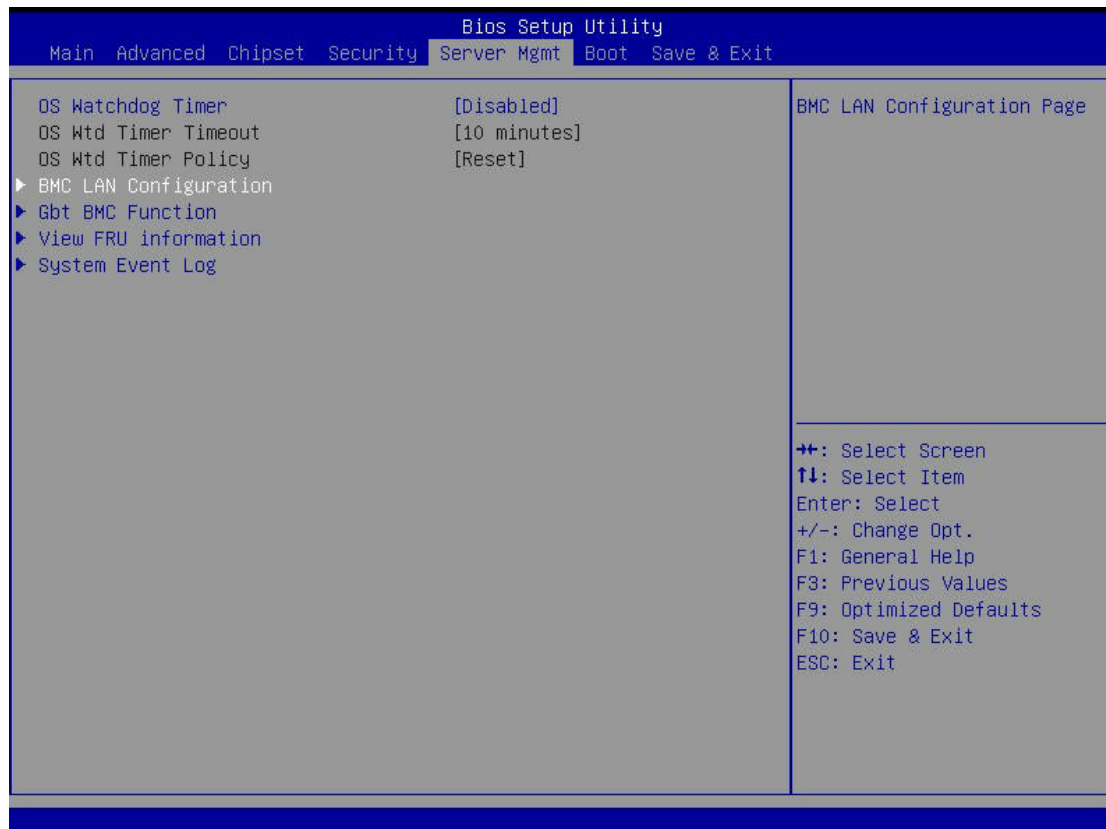
Please follow the instruction to install Java in Windows operating system.

1. Go to <http://www.java.com>
2. Click Download on the middle of the home page.
3. Click on Agree and Start Free Download
4. Click see all Java downloads
5. Select the operating system you are using.
6. Choose the folder location. (Save the file to a known location on your computer)
7. Click Save.
8. Click Yes to replace.
9. Verify that the
 - Name of the file is **JavaSetup8u25.exe**
 - Size is approximately 623KB.
10. Close all applications including the browser.
11. Double-click on the saved file icon to start the installation process.

Gigabyte Content Management Network Configuration

Please follow the instruction to enable the console redirection function.

1. Go to BIOS setup menu.
2. Select **Server Management**.
3. Define **BMC LAN Configuration** to **Dynamic** or **Static**.
4. Save and Exit.
5. The **BMC IP Address** will appear on the **IPv4 Address** parameter.



Bios Setup Utility		
Server Mgmt		
Lan Channel 1		
Configuration Source	[Dynamic]	Select to configure LAN channel parameters statically or dynamically(DHCP). Do nothing option will not modify any BMC network parameters during BIOS phase
IP Address	010.001.111.104	
Subnet Mask	255.255.255.000	
Default Gateway Address	010.001.111.253	
		↔: Select Screen ↑↓: Select Item Enter: Select +/-: Change Opt. F1: General Help F3: Previous Values F9: Optimized Defaults F10: Save & Exit ESC: Exit

6. Save the configuration and exit BIOS setup menu.

Using the Web UI

The BMC firmware features an embedded web server, enabling users to connect to the BMC using an Internet browser (Microsoft® Internet Explorer™).

The web server shall support 4 concurrent connections

Web-based GUI is supported on the following browsers:

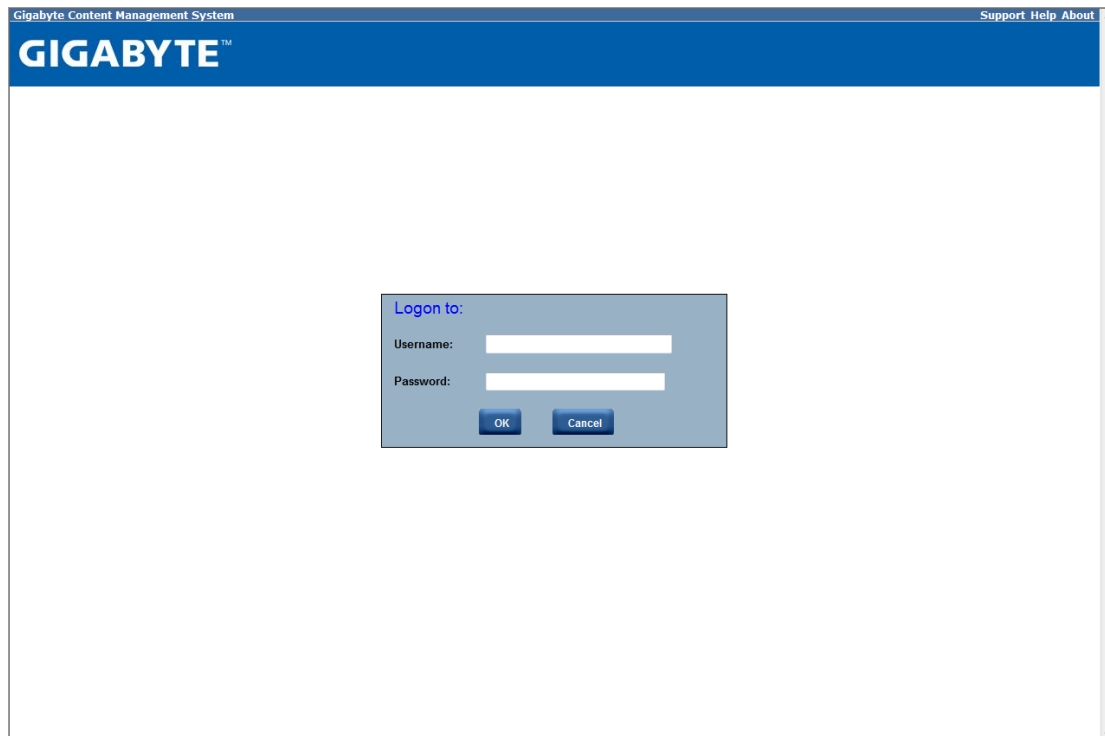
Microsoft Windows:

- Internet Explorer 8 ~ 12
- Mozilla® Firefox® 2.0 or later

Linux:

Mozilla Firefox 2.0 or later

Gigabyte Content Management System Console Overview



1. Open a web browser and type in your identified IP. The IP address can be found using your DHCP server.
2. A dialog box prompts you to enter Username and Password.
3. Enter the following values:

Username: **admin**

Password: **password**



If your motherboard is Intel C20x series chipset, please enter the following values:

Username: **root**

Password: **superuser**



The default user name and password are in lower-case characters.



When you log in using the root user name and password, you have full administrative powers. It is advised that once you log in, you change the root password.

Enter Gigabyte Content Management System Console

After you successfully log into your Gigabyte Content Management System Console, the Remote Management Console GUI appears.

Properties

Properties displays the firmware version of current remote client system.

Gigabyte Content Management System

Support Help About Logout

GIGABYTE™

Welcome root (Administrator) !
Wed Oct 12 2011 16:08:05

■ Gigabyte Content Management System

Properties

■ Configuration

Network

Network Security

Security

Users

Services

IPMI

Time Settings

Sessions

LDAP

Update

Utilities

■ Server Information

■ Power

Control

Voltages

■ Thermal

Fans

Temperatures

System Event Log

■ Event Management

Platform Events

Trap Settings

Email Settings

Serial Over LAN

■ Remote Control

Remote Console

Configuration

Properties

Refresh

Firmware Information

Product Name	Gigabyte Management System
Product Information	Gigabyte Content Management System Version 1.0
Firmware Version	1.04
Building Time	Fri Sep 2 18:33:47 CST 2011
ASIC Type	ast2150

Configuration

Network

You can view and modify the network settings on this screen. Select the Network **Mode** from the drop-down list.

Dedicate Mode

When set to Dedicate Mode, you can configure the BMC related settings through the BMC port.

Shared Mode

When set to Shared Mode, you can configure the BMC related settings through the NIC2 port. (Shared NIC Mode)

Failover Mode

When set to Failover Mode, you can configure the BMC related settings through the BMC or NIC2 port. (Backup Mode)

When you finish configuration, click **Apply Change**.

Please note that the changes may not take effect immediately, click "Refresh" to take effect of changes.

Gigabyte Content Management System

Support Help About Logout

GIGABYTE™

Welcome root (Administrator) |
Wed Oct 12 2011 16:09:47

■ Gigabyte Content Management System

Properties

■ Configuration

Network

Network Security

Security

Users

Services

IPMI

Time Settings

Sessions

LDAP

Update

Utilities

■ Server Information

Power

Control

Voltages

■ Thermal

Fans

Temperatures

System Event Log

■ Event Management

Platform Events

Trap Settings

Email Settings

Serial Over LAN

■ Remote Control

Remote Console

Configuration

Network

Apply Changes Refresh

General Settings

Changes to the mode settings may change IP address settings. This may cause a brief loss in connectivity. Changes may not take effect immediately, and require a refresh.

Mode	1
Host Name	GIGABYTE Management Module
DNS Domain Name	AvctDomain

Network Interface Configuration

Name	IF Enabled	IPv4 Enabled	IPv4 Address
ncsi0	Enabled	Enabled	10.1.111.12

Network Security

You can configure the network security settings on this screen. Check the **IP Blocking Enabled** box and input the desire value of **IP Blocking Fail Count**, **IP Blocking Fail Window**, and **IP Blocking Penalty Time**. After you finish the configuration, click **Apply Change** to save the settings.

Gigabyte Content Management System

Support Help About Logout

GIGABYTE™

Welcome root (Administrator) !
Wed Oct 12 2011 16:10:46

■ Gigabyte Content Management System

Properties

■ Configuration

Network

Network Security

Security

Users

Services

IPMI

Time Settings

Sessions

LDAP

Update

Utilities

■ Server Information

Power

Control

Voltages

Thermal

Fans

Temperatures

System Event Log

■ Event Management

Platform Events

Trap Settings

Email Settings

Serial Over LAN

■ Remote Control

Remote Console

Configuration

Network Security

Use this page to configure the network security settings.

IP Blocking Enabled

☐

IP Blocking Fail Count

IP Blocking Fail Window

Seconds

IP Blocking Penalty Time

Seconds

Apply Changes

Users

To configure a specific user, click the Users ID. To display new user information, click **Refresh**.

NOTE: BMC convention for enabling an ‘anonymous’ login is to configure the entry for User ID 1 with a null username (all zero’s) and a null password (all zero’s). Applications may then present this to the user as an anonymous login.

Gigabyte Content Management System

Support Help About Logout

GIGABYTE™

Welcome root (Administrator) !
Wed Oct 12 2011 16:12:59

■ Gigabyte Content Management System

Properties

■ Configuration

Network

Network Security

Security

Users

Services

IPMI

Time Settings

Sessions

LDAP

Update

Utilities

■ Server Information

Power

Control

Voltages

■ Thermal

Fans

Temperatures

System Event Log

■ Event Management

Platform Events

Trap Settings

Email Settings

Serial Over LAN

■ Remote Control

Remote Console

Configuration

Users

Apply Changes

Refresh

To configure a particular user, click the User ID. If Password policy check is enabled, password strength checking will be enabled while updating user configuration.

☒ Password policy check enable

User ID	State	User Name	User Role	IPMI LAN Privilege	IPMI Serial Privilege	Serial Over LAN
1	Disabled		None	None	None	Disabled
2	Enabled	admin	Administrator	Administrator	Administrator	Enabled
3	Enabled	root	Administrator	Administrator	Administrator	Enabled
4	Disabled		None	None	None	Disabled
5	Disabled		None	None	None	Disabled
6	Disabled		None	None	None	Disabled
7	Disabled		None	None	None	Disabled
8	Disabled		None	None	None	Disabled
9	Disabled		None	None	None	Disabled
10	Disabled		None	None	None	Disabled
11	Disabled		None	None	None	Disabled
12	Disabled		None	None	None	Disabled
13	Disabled		None	None	None	Disabled
14	Disabled		None	None	None	Disabled
15	Disabled		None	None	None	Disabled
16	Disabled		None	None	None	Disabled

Services

You can configure the web server parameters (such as, HTTP Port Number, HTTPS Port Number, and Timeout) on a remote computer. By default, the timeout is 1800 seconds.

When you finish the configuration, click **Apply Changes**.

Gigabyte Content Management System

Support Help About Logout

GIGABYTE™

Welcome root (Administrator) !
Wed Oct 12 2011 16:13:59

■ Gigabyte Content Management System

Properties

■ Configuration

Network

Network Security

Security

Users

Services

IPMI

Time Settings

Sessions

LDAP

Update

Utilities

■ Server Information

■ Power

Control

Voltages

■ Thermal

Fans

Temperatures

System Event Log

■ Event Management

Platform Events

Trap Settings

Email Settings

Serial Over LAN

■ Remote Control

Remote Console

Configuration

Services

Apply Changes

Web Server

HTTP Port Number	80
HTTPS Port Number	443
Timeout	1800 seconds
Max Sessions	32
Active Sessions	1

IPMI

This screen contains two sections: IPMI Serial and IPMI Settings.

IPMI Serial

There are four serial configuration in IPMI Serial: **Connection Mode Settings**, **Baud Rate**, **Flow Control**, and **Channel Privilege Level Limit**.

The Connection Mode Settings allows user to select the Console redirection type and to manage the system from a remote location.

Once the connection mode is set, select the Baud Rate and Flow Control from the drop-down list.

With Channel Privilege Level Limit, users can be configured to operate with a particular maximum Privilege Level. Privilege levels tell the BMC which commands are allowed to be executed. The following table shows the Channel Privilege Level.

Users	This may be considered the lowest privilege level.
Operator	All BMC commands are allowed, except for configuration commands that can change the behavior of the out-of-band interfaces. For example, Operator privilege does not allow the capability to disable individual channels, or change user access privileges.
Administrator	All BMC commands are allowed, including configuration commands. An Administrator can even execute configuration commands that would disable the channel that the Administrator is communicating over.

Gigabyte Content Management System

Support Help About Logout

GIGABYTE™

Welcome root (Administrator) !
Wed Oct 12 2011 16:14:32

■ Gigabyte Content Management System

Properties

■ Configuration

Network

Network Security

Security

Users

Services

IPMI

Time Settings

Sessions

LDAP

Update

Utilities

■ Server Information

Power

Control

Voltages

■ Thermal

Fans

Temperatures

System Event Log

■ Event Management

Platform Events

Trap Settings

Email Settings

Serial Over LAN

■ Remote Control

Remote Console

Configuration

IPMI

Apply Changes

IPMI Serial

Connection Mode Settings

Direct Connect Terminal Mode ▾

Baud Rate

57.6 kbps ▾

Flow Control

None ▾

Channel Privilege Level Limit

Administrator ▾

IPMI Settings

Enable IPMI Over LAN

☒

Channel Privilege Level Limit

Administrator ▾

Encryption Key

00000000000000000000000000000000

IPMI Settings

IPMI Settings provides remote configuration over LAN. To activate IPMI remote configuration by LAN, check Enable IPMI Over LAN option, define the Channel Privilege Level Limit, and enter the Encryption Key.

When you finish the configuration, click “Apply Changes”.

Time Setting

This page provides the mechanism to configure the Network Time acquisition method. With Administrator or Operator privilege level, you can modify configuration settings and click the Apply Changes button to execute the settings, as well as click the Sync Time Now button (when in Requested Mode) to request an immediate clock set.

Operation Mode

Configures the NTP Mode. You can Disable NTP, set **Requested Mode**, or **Daemon Mode** in this parameter.

In **Requested Mode**, you can request an immediate clock synchronization with the NTP server; request will be sent when click the Sync Time Now button.

The **Daemon Mode** runs NTP daemon which sends a NTP request at approximately 5 minute intervals. Multiple NTP servers may be specified to provide redundancy.

Time Synchronization Method

Specifies the synchronization method for Requested Mode. Select **Slew mode** when you want to adjust the time smoothly over time if there are time sensitive applications in place. Select **Step mode** to aggressively change the time using settimeofday() system call.

Gigabyte Content Management System

Support Help About Logout

GIGABYTE™

Welcome root (Administrator) !
Wed Oct 12 2011 17:32:18

■ Gigabyte Content Management System

■ Properties

■ Configuration

■ Network

■ Network Security

■ Security

■ Users

■ Services

■ IPMI

■ Time Settings

■ Sessions

■ LDAP

■ Update

■ Utilities

■ Server Information

■ Power

■ Control

■ Voltages

■ Thermal

■ Fans

■ Temperatures

■ System Event Log

■ Event Management

■ Platform Events

■ Trap Settings

■ Email Settings

■ Serial Over LAN

■ Remote Control

■ Remote Console

■ Configuration

Time Settings

Sync Time NowApply ChangesRefresh

Use this page to configure the Network Time Protocol settings.

Network Time Protocol

Operation Mode	Requested Mode
NTP Server 1	
NTP Server 2	
NTP Server 3	
Requested Modes' Update Frequency (minutes)	3
Time Synchronization Method	<input checked="" type="radio"/> Step Mode <input type="radio"/> Slew Mode

Sessions

This screen displays information on Active Sessions. Additionally, the trash can icon provides the delete function for privileged users. Click **Refresh** to refresh the Sessions status.

Gigabyte Content Management System

Support Help About Logout

GIGABYTE™

Welcome root (Administrator) !
Wed Oct 12 2011 16:16:12

▣ Gigabyte Content Management System

Properties

▣ Configuration

Network

Network Security

Security

Users

Services

IPMI

Time Settings

Sessions

LDAP

Update

Utilities

▣ Server Information

▣ Power

Control

Voltages

▣ Thermal

Fans

Temperatures

System Event Log

▣ Event Management

Platform Events

Trap Settings

Email Settings

Serial Over LAN

▣ Remote Control

Remote Console

Configuration

Sessions

Refresh

Use this page to view information about the active sessions. Additionally, privileged users can click on the trash can icon to kill an active session.

Session ID	User Name	IP Address	Session Type	Kill
1	root	10.1.111.37	Virtual KVM	
2	root	10.1.2.37	GUI	N/A

18

LDAP

LDAP screen allows download user list of LDAP server then create Gigabyte Content Management System Console user account from this list directly.

Check the box below to enable LDAP authentication and enter the required information to access the LDAP server. Click **Apply Changes** to save your changes.

Gigabyte Content Management System

Support Help About Logout

GIGABYTE™

Welcome root (Administrator)!
Wed Oct 12 2011 16:17:10

- Gigabyte Content Management System
 - Properties
 - Configuration
 - Network
 - Network Security
 - Security
 - Users
 - Services
 - IPMI
 - Time Settings
 - Sessions
 - LDAP
 - Update
 - Utilities
 - Server Information
 - Power
 - Control
 - Voltages
 - Thermal
 - Fans
 - Temperatures
 - System Event Log
 - Event Management
 - Platform Events
 - Trap Settings
 - Email Settings
 - Serial Over LAN
 - Remote Control
 - Remote Console
 - Configuration

LDAP Configuration Page

Apply Changes

Refresh

Use this page to configure Lightweight Directory Access Protocol (LDAP).

Enable LDAP	<input type="checkbox"/>
Enable Encryption for LDAP client	<input checked="" type="checkbox"/>
Validate Server Certificate at Binding	<input type="checkbox"/>
Certificate File Path	<input type="text" value="/etc/certs/cacerts/ldap.cert"/>
Use DNS to find servers	<input type="checkbox"/>
Domain Source	<input type="text" value="Use Domain from Login"/>
Domain Name for DNS SVR request	<input type="text"/>
Service Name	<input type="text" value="ldap"/>
Domain Controller 1	<input type="text"/>
Domain Controller 1's Port	<input type="text" value="389"/>
Domain Controller 2	<input type="text"/>
Domain Controller 2's Port	<input type="text" value="389"/>
Domain Controller 3	<input type="text"/>
Domain Controller 3's Port	<input type="text" value="389"/>
Base Domain Name	<input type="text"/>
UID Search Object value	<input type="text" value="sAMAccountName"/>
Group Filter	<input type="text"/>
Binding Method	<input type="text" value="Use Login Credentials"/>
Client ID used with CC binding	<input type="text"/>
Client Password used with CC binding	<input type="text"/>
Group ID Attribute	<input type="text" value="memberOf"/>
Attribute to query permission in group	<input type="text"/>

Updates

The firmware can be updated remotely.

To update firmware, follow the instruction below:

1. Select Update Type.
2. Select the file on your local system using Browse.

Click **Upload** to update to the new version of firmware.

The screenshot shows the Gigabyte Content Management System interface. The top navigation bar includes links for Support, Help, About, and Logout. The main header displays the GIGABYTE logo and a welcome message for user 'root (Administrator)' on Wednesday, October 12, 2011, at 16:18:08. A left sidebar contains a tree view of system settings, with 'Update' highlighted under the 'Configuration' section. The main content area is titled 'Firmware Update' and features an 'Upload' section. This section includes a warning icon and text stating that the upload process will terminate all other sessions, including Remote Console. It also notes that if 'BMC' firmware type is selected, any attempt to refresh, logout, or navigate away will restart the system. Below the text, there is a form with a 'Firmware Type' dropdown menu set to 'BMC' and a 'File Path' input field with a 'Browse...' button. An 'Upload' button is positioned to the right of the input field.

Gigabyte Content Management System [Support](#) [Help](#) [About](#) [Logout](#)

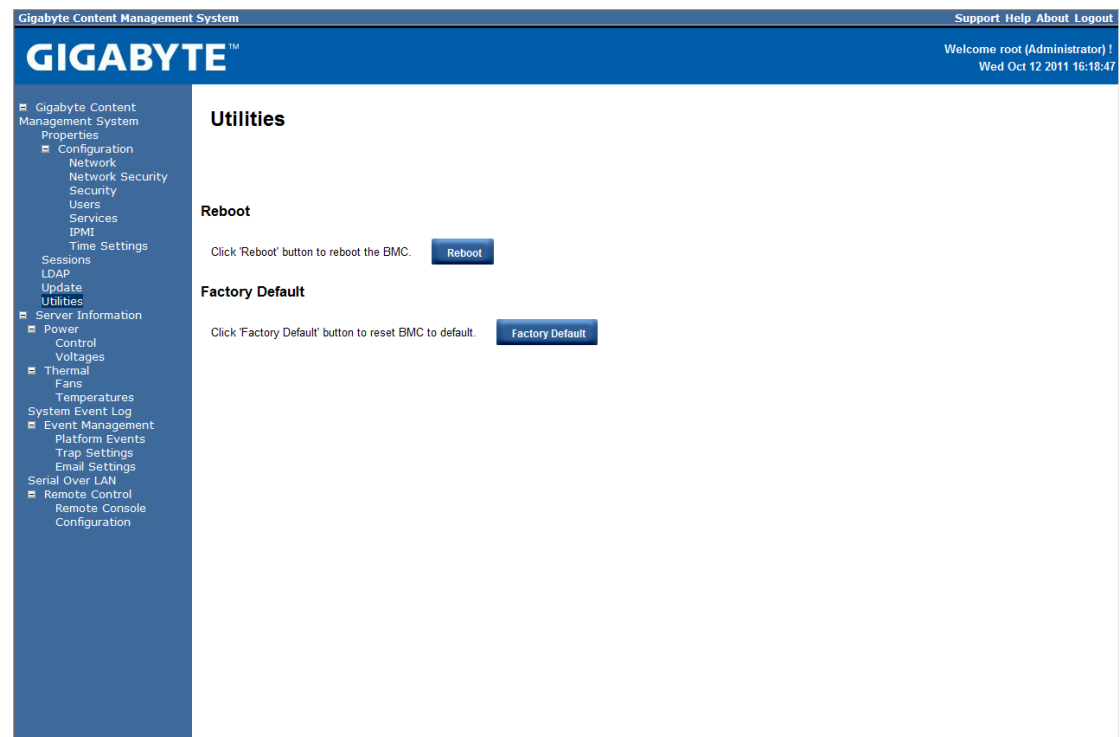
GIGABYTE™ Welcome root (Administrator) !
Wed Oct 12 2011 16:18:08

- Gigabyte Content Management System
 - Properties
 - Configuration
 - Network
 - Network Security
 - Security
 - Users
 - Services
 - IPMI
 - Time Settings
 - Sessions
 - LDAP
 - Update
 - Utilities
 - Server Information
 - Power
 - Control
 - Voltages
 - Thermal
 - Fans
 - Temperatures
 - System Event Log
 - Event Management
 - Platform Events
 - Trap Settings
 - Email Settings
 - Serial Over LAN
 - Remote Control
 - Remote Console
 - Configuration

Utilities

Utilities provides BMC reboot and Factory default restore functions.

1. To reboot system, click **Reboot**.
2. To restore factory default, click **Factory Default**.



Server Information

Power Control

The Power Control allows you to power on/off/cycle the remote host system. Additionally you can see the remote power status.

To perform the power control operation, select the operation and click **Apply Changes**.

The screenshot shows the Gigabyte Content Management System (CMS) interface. The top navigation bar includes links for Support, Help, About, and Logout. The main header displays the GIGABYTE logo and the user's login information: "Welcome root (Administrator) !" and the date/time "Wed Oct 12 2011 16:19:31".

The left sidebar contains a tree view of the system's configuration options, including Gigabyte Content Management System, Properties, Configuration, Network, Security, Users, Services, IPMI, Time Settings, Sessions, LDAP, Update, Utilities, Server Information, Power, Control, Voltages, Thermal, Fans, Temperatures, System Event Log, Event Management, Platform Events, Trap Settings, Email Settings, Serial Over LAN, Remote Control, Remote Console, and Configuration.

The main content area is titled "Power Control". It features a blue "Apply Changes" button in the top right corner. Below the button, a message states: "Here, you can view your server's power status. To perform a power control operation, select the operation you wish to perform and click Apply Changes."




The interface displays two sections:

- Power Status:** A blue bar with the text "ON".
- Power Control Operations:** A list of four operations, each with a radio button:
 - Power On System
 - Power Off System
 - Power Cycle System
 - Hard Reset (Restart)

Voltages

This screen displays the status of system power consumption.

Each sensor displays different color to indicate the health status of a specified device.

	The green color indicates the device is healthy and there's no sensor that has any alert.
	The yellow color indicates the device has at least one sensor that has warning alert.
	The red color indicates the device has at least one sensor that has a critical alert.

Click **Refresh** to update current system voltages.

Gigabyte Content Management System

Support Help About Logout

GIGABYTE™

Welcome root (Administrator) !
Wed Oct 12 2011 16:20:02

- Gigabyte Content Management System
 - Properties
 - Configuration
 - Network
 - Network Security
 - Security
 - Users
 - Services
 - IPMI
 - Time Settings
 - Sessions
 - LDAP
 - Update
 - Utilities
 - Server Information
 - Power
 - Control
 - Voltages
 - Thermal
 - Fans
 - Temperatures
 - System Event Log
 - Event Management
 - Platform Events
 - Trap Settings
 - Email Settings
 - Serial Over LAN
 - Remote Control
 - Remote Console
 - Configuration

Voltages




Refresh

Status	Probe Name	Reading	Warning Threshold		Failure Threshold	
			Minimum	Maximum	Minimum	Maximum
✓	PVCC_CPU	1.2120 V	0.5640V	1.4160V	0.4920V	1.4640V
✓	P1V5_VDDQ	1.5120 V	1.3440V	1.6440V	1.2840V	1.7040V
✓	P1V05_PCH	1.0560 V	0.9480V	1.1520V	0.9000V	1.2000V
✓	P5V	5.0609 V	4.4884V	5.4960V	4.2823V	5.7021V
✓	P3V3	3.3462 V	2.9700V	3.6234V	2.8314V	3.7620V
✓	P12V	12.045 V	10.835V	13.255V	10.340V	13.695V
✓	P3V_BAT	3.1680 V	2.6880V	3.2880V	2.5680V	3.4080V

Thermal

This screen displays the Fans and Temperatures sensors of a remote host system.

Click **Refresh** to update current health status for both Fans and Temperatures.

	The green color indicates the device is healthy and there's no sensor that has any alert.
	The yellow color indicates the device has at least one sensor that has a warning alert.
	The red color indicates the device has at least one sensor that has a critical alert.

Fans

Gigabyte Content Management System

Support Help About Logout

GIGABYTE™

Welcome root (Administrator) !
Wed Oct 12 2011 16:20:45

- Gigabyte Content Management System
 - Properties
 - Configuration
 - Network
 - Network Security
 - Security
 - Users
 - Services
 - IPMI
 - Time Settings
 - Sessions
 - LDAP
 - Update
 - Utilities
 - Server Information
 - Power
 - Control
 - Voltages
 - Thermal
 - Fans
 - Temperatures
 - System Event Log
 - Event Management
 - Platform Events
 - Trap Settings
 - Email Settings
 - Serial Over LAN
 - Remote Control
 - Remote Console
 - Configuration

Fans

Refresh

Probe List

Status	Probe Name	Reading	Warning Threshold Minimum	Maximum	Failure Threshold Minimum	Maximum
	CPU FAN	0 RPM	400RPM	N/A	300RPM	N/A
	SYS FAN1	3100 RPM	400RPM	N/A	300RPM	N/A
	SYS FAN2	0 RPM	400RPM	N/A	300RPM	N/A
	SYS FAN3	0 RPM	400RPM	N/A	300RPM	N/A

Temperature

Gigabyte Content Management System

Support Help About Logout

GIGABYTE™

Welcome root (Administrator) !
Wed Oct 12 2011 16:21:13

■ Gigabyte Content Management System

Properties

■ Configuration

Network

Network Security

Security

Users

Services

IPMI

Time Settings

Sessions

LDAP

Update

Utilities

■ Server Information

Power

Control

Voltages

■ Thermal

Fans

Temperatures

System Event Log

■ Event Management

Platform Events

Trap Settings

Email Settings

Serial Over LAN

■ Remote Control

Remote Console

Configuration

Temperatures

Refresh

Status	Probe Name	Reading	Warning Threshold		Failure Threshold	
			Minimum	Maximum	Minimum	Maximum
✓	SYS Temp1	32 C	N/A	57C	N/A	62C
✓	SYS Temp2	37 C	N/A	60C	N/A	65C
✓	CPU Temp	66 C	N/A	93C	N/A	95C

System Event Log

It records the event when sensor has an abnormal state. When the log matches the pre-defined alert, the system sends out the notification automatically, if it is pre-configured.

Gigabyte Content Management System

Support Help About Logout

GIGABYTE™

Welcome root (Administrator) !
Wed Oct 12 2011 16:25:44

Gigabyte Content Management System

Properties

Configuration

Network

Network Security

Security

Users

Services

IPMI

Time Settings

Sessions

LDAP

Update

Utilities

Server Information

Power

Control

Voltages

Thermal

Fans

Temperatures

System Event Log

Event Management

Platform Events

Trap Settings

Email Settings

Serial Over LAN

Remote Control

Remote Console

Configuration

System Event Log

Clear Log Refresh

Severity	Date/Time	Description
✔	2011-10-04 15:16:04	System Software event: System Event sensor, Timestamp Clock Synchron was asserted
⚠	2011-10-04 15:16:04	CPU FAN: Fan sensor, warning event was asserted, reading value : 0RPM (Threshold : 400RPM)
✖	2011-10-04 15:16:04	CPU FAN: Fan sensor, failure event was asserted, reading value : 0RPM (Threshold : 300RPM)
⚠	2011-10-04 15:16:09	SYS FAN3: Fan sensor, warning event was asserted, reading value : 0RPM (Threshold : 400RPM)
✖	2011-10-04 15:16:09	SYS FAN3: Fan sensor, failure event was asserted, reading value : 0RPM (Threshold : 300RPM)
✔	2011-10-04 15:16:09	Sys Pwr Monitor: Power Unit sensor, Power On / Power Up was asserted
✔	2011-10-04 15:16:15	Sys Pwr Monitor: Power Unit sensor, Power Reset was asserted
✔	2011-10-06 13:36:53	Sys Pwr Monitor: Power Unit sensor, Power Off / Power Down was asserted
⚠	[System Boot]	CPU FAN: Fan sensor, warning event was asserted, reading value : 0RPM (Threshold : 400RPM)
✖	[System Boot]	CPU FAN: Fan sensor, failure event was asserted, reading value : 0RPM (Threshold : 300RPM)
⚠	[System Boot]	SYS FAN3: Fan sensor, warning event was asserted, reading value : 0RPM (Threshold : 400RPM)
✖	[System Boot]	SYS FAN3: Fan sensor, failure event was asserted, reading value : 0RPM (Threshold : 300RPM)
✔	2011-10-06 15:23:40	System Software event: System Event sensor, Timestamp Clock Synchron was asserted
⚠	2011-10-06 15:23:42	CPU FAN: Fan sensor, warning event was asserted, reading value : 0RPM (Threshold : 400RPM)
✖	2011-10-06 15:23:42	CPU FAN: Fan sensor, failure event was asserted, reading value : 0RPM (Threshold : 300RPM)
⚠	2011-10-06 15:23:50	SYS FAN3: Fan sensor, warning event was asserted, reading value : 0RPM (Threshold : 400RPM)
✖	2011-10-06 15:23:50	SYS FAN3: Fan sensor, failure event was asserted, reading value : 0RPM (Threshold : 300RPM)
✔	2011-10-06 15:24:21	System Software event: OS Boot sensor, boot completed - boot device not specific was asserted
✔	2011-10-06 15:24:33	Sys Pwr Monitor: Power Unit sensor, Power Reset was asserted

11

Event Management

Platform Event

A platform event filter (PEF) can trigger an action and generate an alert when a critical hardware-related event occurs. For each PEF, you can choose the action to be taken when a platform event occurs.

You can also choose to generate and send an alert when a platform event occurs. In the Platform Events screen, you can enable the generation of platform event alerts globally by clicking Global Alerting Enable.

When you finish the configuration, click **Apply Changes**.

Gigabyte Content Management System

Support Help About Logout

GIGABYTE™

Welcome root (Administrator) !
Wed Oct 12 2011 16:26:51

- Gigabyte Content Management System
 - Properties
 - Configuration
 - Network
 - Network Security
 - Security
 - Users
 - Services
 - IPMI
 - Time Settings
 - Sessions
 - LDAP
 - Update
 - Utilities
 - Server Information
 - Power
 - Control
 - Voltages
 - Thermal
 - Fans
 - Temperatures
 - System Event Log
 - Event Management
 - Platform Events
 - Trap Settings
 - Email Settings
 - Serial Over LAN
 - Remote Control
 - Remote Console
 - Configuration

Platform Events

Apply Changes

Platform Event Filters (PEF) List

☐ Global Alerting Enable Note: (This enables/disables both PET and email alerts).

Filter Name	None	Reboot	Power Cycle	Power Off	Generate PET
Threshold Type, Fan Critical Assert Filter	<input type="radio"/>	<input checked="" type="radio"/>	<input checked="" type="radio"/>	<input type="radio"/>	<input type="checkbox"/>
Threshold Type, Fan Warning Assert Filter	<input checked="" type="radio"/>	<input type="radio"/>	<input type="radio"/>	<input type="radio"/>	<input type="checkbox"/>
Threshold Type, Voltage Critical Assert Filter	<input type="radio"/>	<input type="radio"/>	<input checked="" type="radio"/>	<input type="radio"/>	<input type="checkbox"/>
Threshold Type, Voltage Warning Assert Filter	<input checked="" type="radio"/>	<input type="radio"/>	<input type="radio"/>	<input type="radio"/>	<input type="checkbox"/>
Threshold Type, Temperature Critical Assert Filter	<input type="radio"/>	<input type="radio"/>	<input checked="" type="radio"/>	<input type="radio"/>	<input type="checkbox"/>
Threshold Type, Temperature Warning Assert Filter	<input checked="" type="radio"/>	<input type="radio"/>	<input type="radio"/>	<input type="radio"/>	<input type="checkbox"/>
Sensor-specific Type, Power Unit Critical Assert Filter	<input type="radio"/>	<input type="radio"/>	<input checked="" type="radio"/>	<input type="radio"/>	<input type="checkbox"/>
Sensor-specific Type, Processor Critical Assert Filter	<input checked="" type="radio"/>	<input type="radio"/>	<input type="radio"/>	<input type="radio"/>	<input type="checkbox"/>
Sensor-specific Type, Memory Critical Assert Filter	<input type="radio"/>	<input type="radio"/>	<input checked="" type="radio"/>	<input type="radio"/>	<input type="checkbox"/>

Trap Settings

In the Trap Settings, user can set the IPv4 and Ipv6 Destination List.

IPv6 and IPv4 are two completely separate protocols. IPv6 is not backwards compatible with IPv4, and IPv4 hosts and routers will not be able to deal directly with IPv6 traffic.

IPv6 has a significantly larger address space than IPv4. This results from the use of a 128-bit address, whereas IPv4 uses only 32 bits.

When you finish the configuration, click **Apply Changes**.

Gigabyte Content Management System

Support Help About Logout

GIGABYTE™

Welcome root (Administrator) !
Wed Oct 12 2011 16:27:37

- Gigabyte Content Management System
 - Properties
 - Configuration
 - Network
 - Network Security
 - Security
 - Users
 - Services
 - IPMI
 - Time Settings
 - Sessions
 - LDAP
 - Update
 - Utilities
 - Server Information
 - Power
 - Control
 - Voltages
 - Thermal
 - Fans
 - Temperatures
 - System Event Log
 - Event Management
 - Platform Events
 - Trap Settings
 - Email Settings
 - Serial Over LAN
 - Remote Control
 - Remote Console
 - Configuration

Trap Settings

Apply Changes

IPv4 Destination List

	Enable	IPv4 Address	Test
IPv4 Destination 1	<input checked="" type="checkbox"/>	0.0.0.0	<button>Send Test Trap</button>
IPv4 Destination 2	<input type="checkbox"/>	0.0.0.0	<button>Send Test Trap</button>
IPv4 Destination 3	<input checked="" type="checkbox"/>	0.0.0.0	<button>Send Test Trap</button>
IPv4 Destination 4	<input type="checkbox"/>	0.0.0.0	<button>Send Test Trap</button>

Community String

Community Name

public

Email Settings

If you want the alert to be sent by email, you can configure to specify the e-mail address, subject and message in the Email Settings. After you finish the configuration, click Apply Change to save the settings.

SMTP

Set E-mail (SMTP) server IP address for sending alert notification to user.

Check the SMTP Authentication **Enabled** box and enter the **SMTP IP address**, **User Name**, **Password**; select the **STARTTLS Mode** and **SASL Mode** from the drop-down list.

When you finish the configuration, click “Apply Changes”.

Gigabyte Content Management System

Support Help About Logout

GIGABYTE™

Welcome root (Administrator) !
Wed Oct 12 2011 16:28:57

- Gigabyte Content Management System
 - Properties
 - Configuration
 - Network
 - Network Security
 - Security
 - Users
 - Services
 - IPMI
 - Time Settings
 - Sessions
 - LDAP
 - Update
 - Utilities
 - Server Information
 - Power
 - Control
 - Voltages
 - Thermal
 - Fans
 - Temperatures
 - System Event Log
 - Event Management
 - Platform Events
 - Trap Settings
 - Email Settings
 - Serial Over LAN
 - Remote Control
 - Remote Console
 - Configuration

Email Settings

Apply Changes

Destination Email Addresses

	Enable	Destination Email Address	Email Description	Test
Email Alert 1	<input type="checkbox"/>		Remote Managemen	Send Alert 1
Email Alert 2	<input type="checkbox"/>		Remote Managemen	Send Alert 2
Email Alert 3	<input type="checkbox"/>		Remote Managemen	Send Alert 3
Email Alert 4	<input type="checkbox"/>		Remote Managemen	Send Alert 4

SMTP (email) Server Address

SMTP IP Address 0.0.0.0

SMTP Authentication

Enable ☐ Anonymous account will be used when authentication is disabled.

Username

Password

STARTTLS Mode AUTO

SASL Mode AUTO

Serial Over LAN

You can configure the Serial Over LAN settings on this screen. Check the **Enable Serial Over LAN** box and select the **Baud Rate** and **Channel Privilege Limit** from the drop-down list. After you finish the configuration, click **Apply Change** to save the settings.

Gigabyte Content Management System

Support Help About Logout

GIGABYTE™

Welcome root (Administrator) !
Wed Oct 12 2011 16:29:45

▣ Gigabyte Content Management System

Properties

▣ Configuration

Network

Network Security

Security

Users

Services

IPMI

Time Settings

Sessions

LDAP

Update

Utilities

▣ Server Information

Power

Control

Voltages

▣ Thermal

Fans

Temperatures

System Event Log

▣ Event Management

Platform Events

Trap Settings

Email Settings

Serial Over LAN

▣ Remote Control

Remote Console

Configuration

Serial Over LAN

Apply Changes

Enable Serial Over LAN	<input checked="" type="checkbox"/>
Baud Rate	115.2 kbps ▾
Channel Privilege Level Limit	Administrator ▾

Remote Console

Console Redirection

This screen allows you to start a Remote Console session with the host system.

Gigabyte Content Management System

Support Help About Logout

GIGABYTE™

Welcome root (Administrator) !
Wed Oct 12 2011 16:30:58

■ Gigabyte Content Management System

Properties

■ Configuration

Network

Network Security

Security

Users

Services

IPMI

Time Settings

Sessions

LDAP

Update

Utilities

■ Server Information

■ Power

Control

Voltages

■ Thermal

Fans

Temperatures

System Event Log

■ Event Management

Platform Events

Trap Settings

Email Settings

Serial Over LAN

■ Remote Control

Remote Console

Configuration

Virtual Remote Console and Media Launch

Launch Java KVM Client

Launch Java VM Client

Virtual KVM Configuration

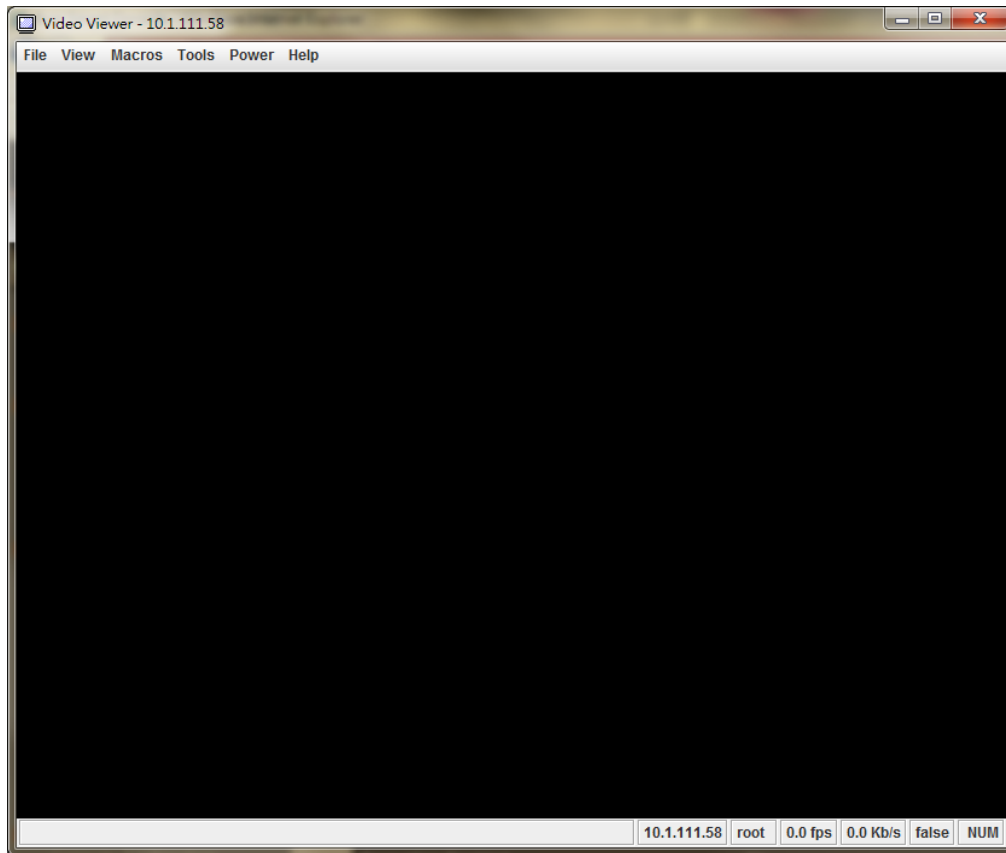
Enabled	Yes
Max Sessions	6
Active Sessions	1
Remote Port	2068
Video Encryption Enabled	Yes
Preferred Client Type	Java

Virtual Media Configuration

Max Sessions	1
Active Sessions	0
Encryption Enabled	No
Preferred Client Type	Java

Launch Java KVM Client

Click **Launch Java KVM Client** to launch the redirection console and manage the server remotely. After clicking the button, a console appears as below:



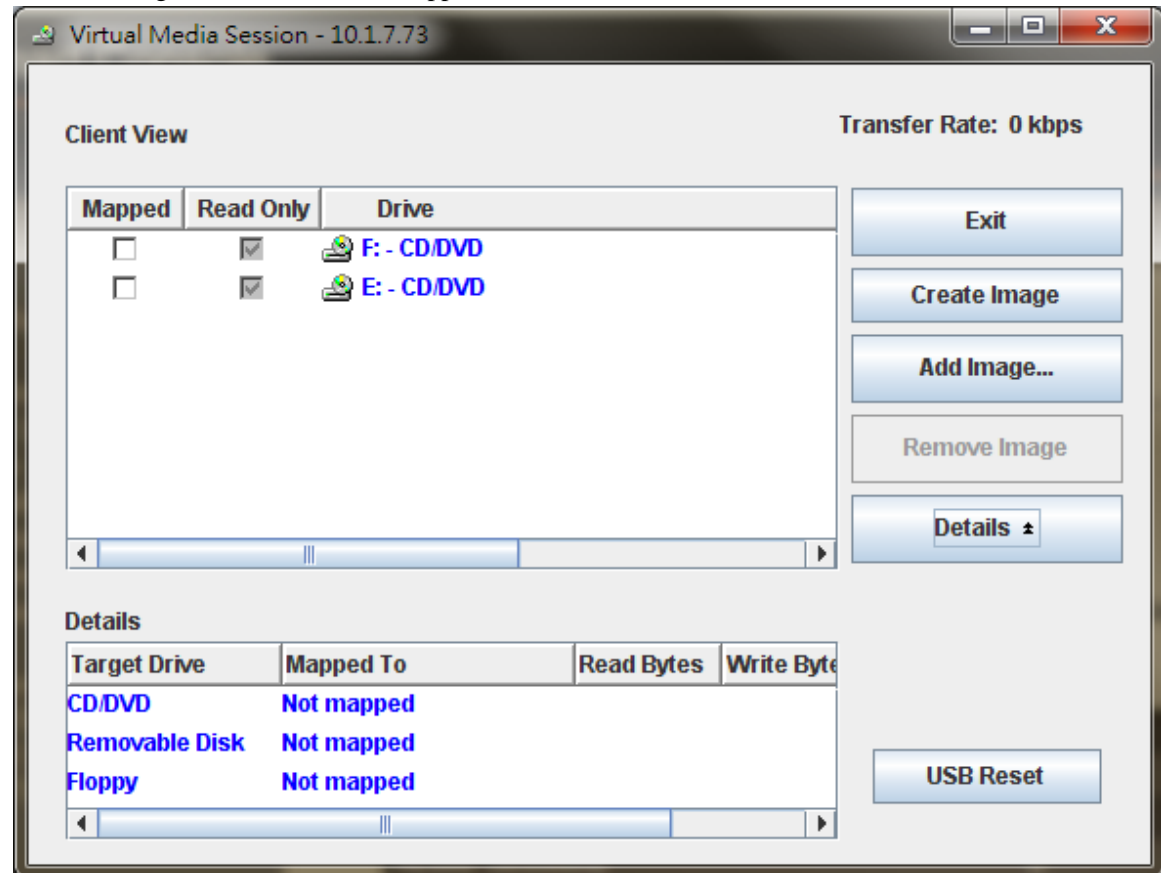
For KVM and remote redirection detail function description, please go to chapter:

KVM Function Description

Launch Java VM Client

Click **Launch Java VM Client** to launch the redirection console and manage the local computer.

After clicking the button, a console appears as below:



Function Item	Resulting Action
Mapped	Check the mapped box next to the drive types you want to connect.
Create Image...	Click the Create Image... button and create to the image.
Add Image...	Click the Add Image... button and browse to the image.
Remove Image	Click the Remove Image... button and remove to the image.
Exit	Click Exit button to terminate the Media Redirection wizard.
Details	Click Details to see more information of the image.
USB Reset	Click USB Reset to reset the USB.

Console Redirection Configuration

This screen allows you to configure the Remote Console settings. Check the Virtual KVM Configuration **Enabled** box or Virtual Media Configuration **Enabled** box, and select the **Max Sessions**, **Remote Port**, **Video Encryption Enabled**, and **Preference Client** from the drop-down list. After you finish the configuration, click “Apply Change” to save the settings.

Gigabyte Content Management System

Support Help About Logout

GIGABYTE™

Welcome root (Administrator) !
Wed Oct 12 2011 16:31:41

■ Gigabyte Content Management System

Properties

■ Configuration

Network

Network Security

Security

Users

Services

IPMI

Time Settings

Sessions

LDAP

Update

Utilities

■ Server Information

Power

Control

Voltages

■ Thermal

Fans

Temperatures

System Event Log

■ Event Management

Platform Events

Trap Settings

Email Settings

Serial Over LAN

■ Remote Control

Remote Console

Configuration

Virtual Remote Console and Media Configuration

Apply Changes

Use this page to configure Virtual KVM and Virtual Media.

Virtual KVM Configuration

Enabled	<input checked="" type="checkbox"/>
Max Sessions	6 ▾
Remote Port	2068
Video Encryption Enabled	<input checked="" type="checkbox"/>
Preferred Client Type	Java ▾

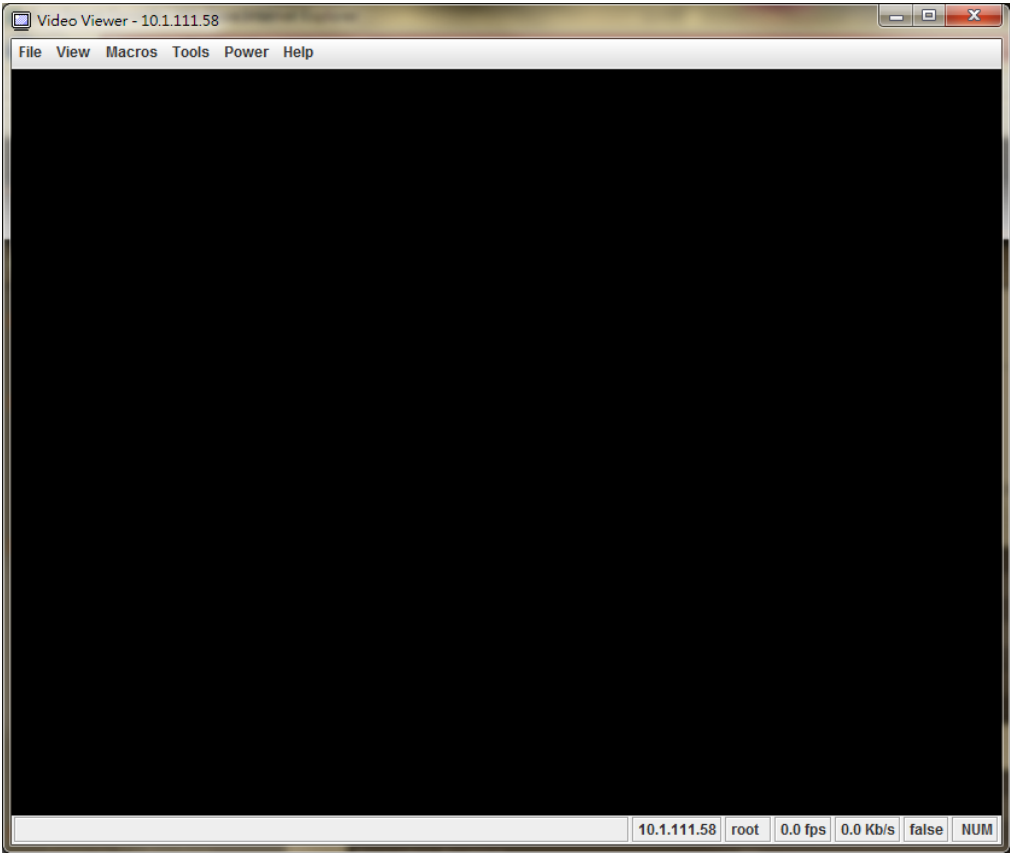
Virtual Media Configuration

Encryption Enabled	<input type="checkbox"/>
Preferred Client Type	Java ▾

34

KVM Function Description

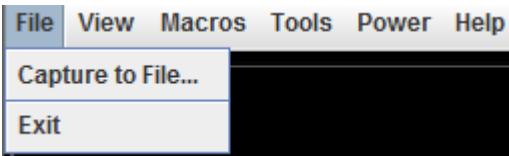
After selecting **KVM Remote Console Redirection** button, system will lead you to the main menu of KVM window which is shown as below:



Main Menu

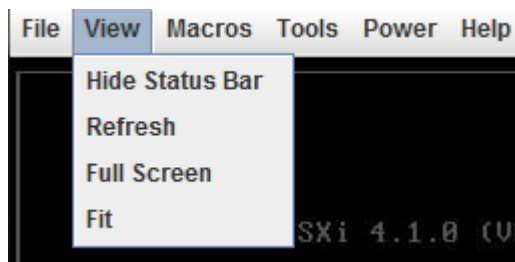
The items in the main menu will be described in the following sections..

File



Menu Item	Resulting Action
File→Capture to File	Save s a snapshot of the target’s desktop to a file.
File→Exit	Terminate the KVM session and close.

View

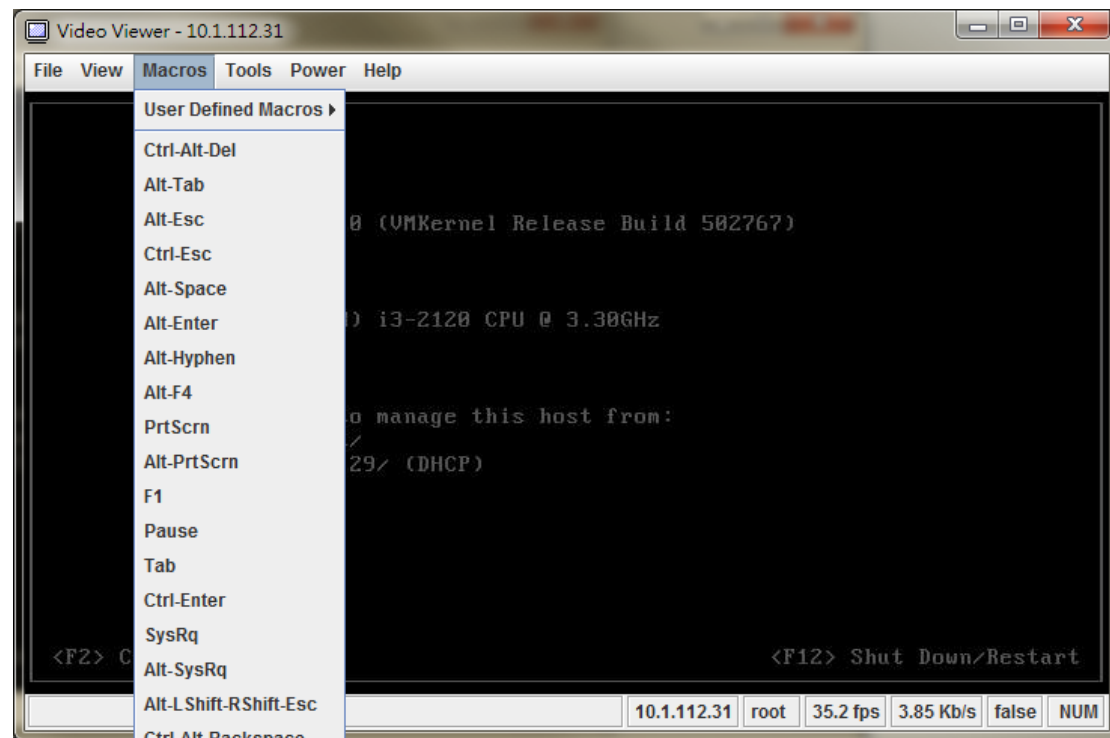


Menu Item	Resulting Action
View → Hide/Show Status Bar	Hide / Show the status bar which includes "Session IP address", "Session Username", "Frame Rate", and "Bandwidth".
View → Refresh	Sends a request to the KVM server asking for a reference screen.
View → Full Screen	Will switch to full screen mode. This menu is only available when not in full screen mode.
View → Fit	Resized the window to the size needed to completely display the targets desktop without an extra border or scrollbars. This will only work if the client desktop is large enough to accommodate the resized window.

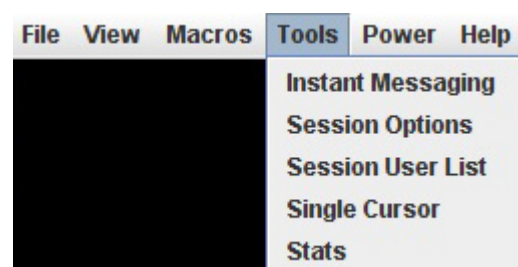
Marcos

Macros are a mechanism to send keystrokes to the target that the user may otherwise not be able to send. One of the most obvious examples of this is the Ctrl-Alt-Del sequence under Window. Because this sequence of keystrokes is intercepted by the Windows OS, the KVM client will never receive the complete sequence and can therefore never send them to the target through normal keyboard operation. The solution to this is to provide an alternate mechanism for generate these keystrokes. We refer to these keystroke sequences as macros.

The list of supported macros is as follows:



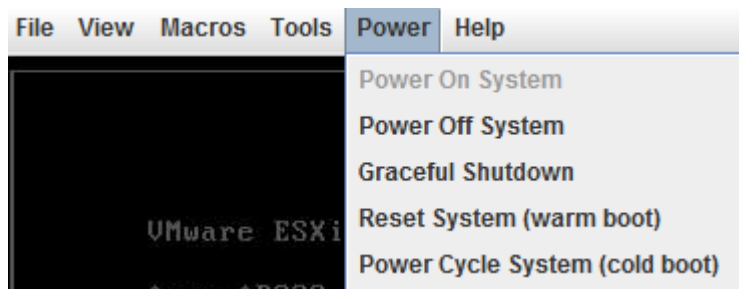
Tools



Menu Item	Resulting Action
Tools → Instant Messaging	This will bring up the instant message.
Tools → Session Options	This will bring up the session options dialog. The session options provide the configuration of Keyboard pass through mode , Mouse , and Video Quality .
Tools → Session User List	This will display all shared KVM users name.
Tools → Single Cursor	Causes the viewer to enter single cursor mode.

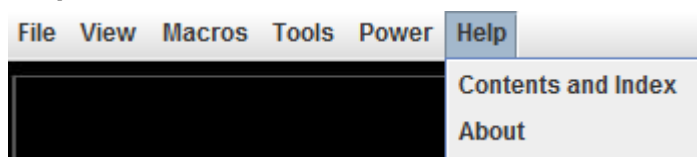
Tools → Stats	Will display the performance statistics dialog.
---------------	---

Power



Menu Item	Resulting Action
Power → Power On System	Turns the power on.
Power → Power Off System	Turns the power off.
Power → Graceful Shutdown	Issue a graceful shutdown command to the target.
Power → Reset System (warm boot)	Issues a reboot command to the target. Target will reboot without powering off.
Power → Power Cycle System (cold boot)	This will power cycle the target by turning the power off for a short period of time and then back on again.

Help



Menu Item	Resulting Action
Help → Contents and Index	Will cause the viewer help to be displayed.
Help → About	Will display a dialog with the product name, version, and copyright notices.