

Scyld TaskMaster™ Suite

Advanced Workload Management for Linux Clusters

The elegant architectures of Scyld ClusterWare and Scyld TaskMaster take the complexity out of clusters, delivering a powerful solution that works straight out of the box.

INTRODUCTION

Penguin Computing understands that compute intensive applications require scalable yet robust computing environments. Scyld ClusterWare™, the company's flagship product, was engineered from the ground up to be an easy to use platform for Linux clustering. And now, with the integration of the Scyld TaskMaster Suite, high performance computing (HPC) users can have a fully integrated and virtualized HPC cluster environment that delivers the right resources at the right time – every time.

The Scyld TaskMaster Suite provides advanced job scheduling and workload management capabilities with an easy-to-use graphical interface and the industry's most flexible policy engine, to ensure that cluster utilization is always optimized.

Highly intuitive, intelligent workload management enables users to align their computational needs with individual and organizational priorities. The elegantly designed architecture of Scyld ClusterWare and Scyld TaskMaster Suite take the complexity out of clusters.

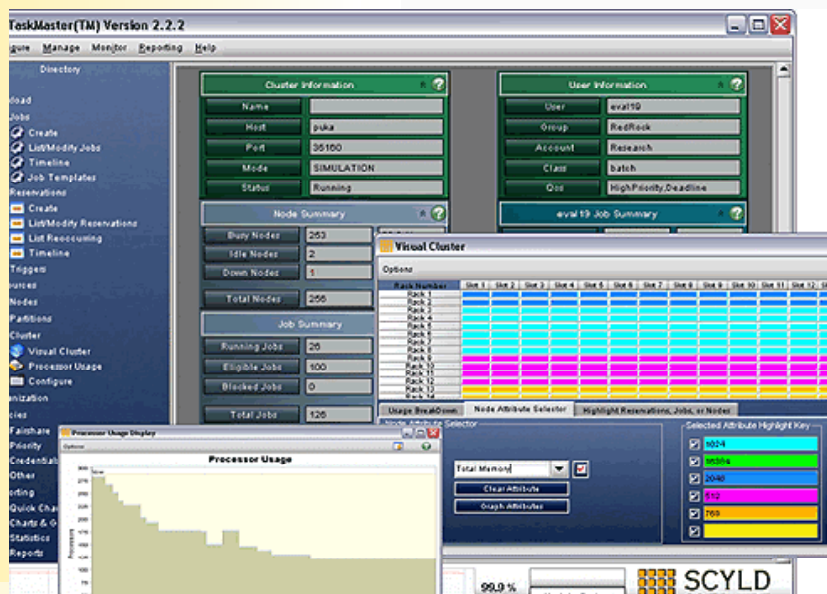
OVERVIEW

The Scyld TaskMaster Suite is a policy-based solution that provides end users and system administrators with a sophisticated workload policy manager, advanced scheduling capabilities, and graphical job submission and cluster management interface that is accessible locally or through a remote Web portal.

The Scyld TaskMaster Suite allows organizations to share resources, applying policies that ensure agreed upon service levels to departments, groups and individual users. With a highly intuitive interface, sites can quickly take full advantage of their clusters' potential, with greater flexibility and control over resource allocation, increasing users' productivity and reducing operational expenses.

BENEFITS

- » Significant improvements in workload throughput with up to 99% utilization rates.
- » Guaranteed resource availability, service level and turnaround time for key projects.
- » Policy based, multi-group sharing that aligns cluster usage with organizational priorities.
- » Web based access for remote and mobile users.
- » Graphical reporting that helps plan and balance workloads.
- » Increased productivity for users and admins



Scyld TaskMaster Suite™

Scyld PolicyManager™

The Scyld PolicyManager is a policy-based job scheduler and event engine that enables utility based computing for Linux clusters. Scyld PolicyManager combines intelligent scheduling with advanced reservation capabilities to process jobs using the right resources at the right time. It also provides flexible policy management logic to process workloads faster and in line with defined business requirements and priorities.

- » Specify workload value and tune priority factors to align with organizational policy.
- » Dynamically set and modify policies, viewing current usage and the impact of new policies on users.
- » Automatically re-order workload schedules and resource allocations based on policies.
- » Use event triggers to automate maintenance tasks, adjust policies, or send notification.

Scyld TaskMaster GUI™

Scyld TaskMaster provides a graphical user interface, For configuring workload management policies, monitoring the resource availability and reporting. Scyld TaskMaster reduces administration costs by enabling both common and complex management tasks such as cluster status, diagnostics, report generation and job submission to be performed faster and easier. This tool enables users and administrators to view, modify and report on the vast amounts of diverse cluster information with a few mouse clicks – instead of the hours or days required with text based reports.

- » Easy to use interface allows immediate and intuitive access to jobs, nodes, statistics and policies.
- » Visually shows users what resources are available for immediate and future use.
- » Enables users to submit and manage jobs with an intelligent, personalized submission screen.
- » Visualize live and historical utilization, resource allocation, and backlog data.
- » Identify problems easily with centralized and visual status reporting.
- » Create professional reports on service levels provided and resource usage for organizational units.

Scyld TaskMaster Portal™

The Scyld TaskMaster Portal is a highly intuitive, graphical, Web based end-user job submission and management tool that provides remote access to the Scyld TaskMaster environment. By delivering universal access without the need to install software on the client device, the Scyld TaskMaster Portal empowers remote and mobile users with all the tools they need to set up, track and manage their own workloads through a browser – enhancing user productivity and decreasing the burden on administrators.

- » Increase user productivity by allowing remote job submission through a Web portal.
- » Simplify end user job submission and management using intuitive Web based forms and wizards.
- » Request specific nodes with needed features, capabilities or other attributes.
- » See graphical charts showing utilization, status, and node features.
- » Enable users to self manage based on credits remaining and built-in user feedback reports.

The technology delivered with Scyld TaskMaster enables users to achieve significant improvements in cluster throughput with system utilization levels up to 90% to 99%.

BECOME HIGHLY SCYLD

Together with Scyld ClusterWare, the Scyld TaskMaster Suite delivers state-of-the-art Linux cluster technology for even the most demanding high performance computing organizations. With transparent access to a virtualized compute environment, users concentrate on critical projects instead of struggling with the complexities of workload and system management.

Elegantly designed and commercially supported, Scyld ClusterWare and Scyld TaskMaster Suite provide the ease of deployment, single point of management and intuitive use that enable fast moving organizations with impossible deadlines and shrinking budgets to deliver. So, ask us today how you can become Highly Scyld.

1-888-PENGUIN